

Key Features

Zero-footprint, web-based client.

No client installation means no client deployment overhead, no client administration, no platform dependency.

Comprehensive user management, including configurable role-based access control, user account management, and granular audit logging of all user actions.

Complete device configuration, monitoring, and management for SafeEnterprise network security solutions.

Deployment and management of device PKI. No external PKI required

SNMP Proxy Agent provides northbound SNMP interface to your OSS/NMS

Batch firmware download - Upgrade your entire network in a single operation

Pervasive system security - SSL, IPSec, PKI, password enforcement, FIPS

5 minute installation and deployment

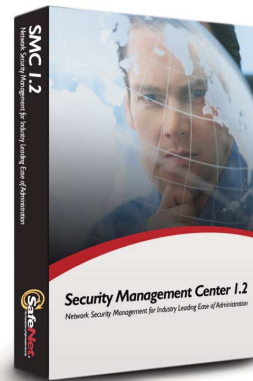
SafeEnterprise Security Management Center

The Industry's Only Complete Network Security Management Solution

Security Management For Demanding Enterprise And Global Networks

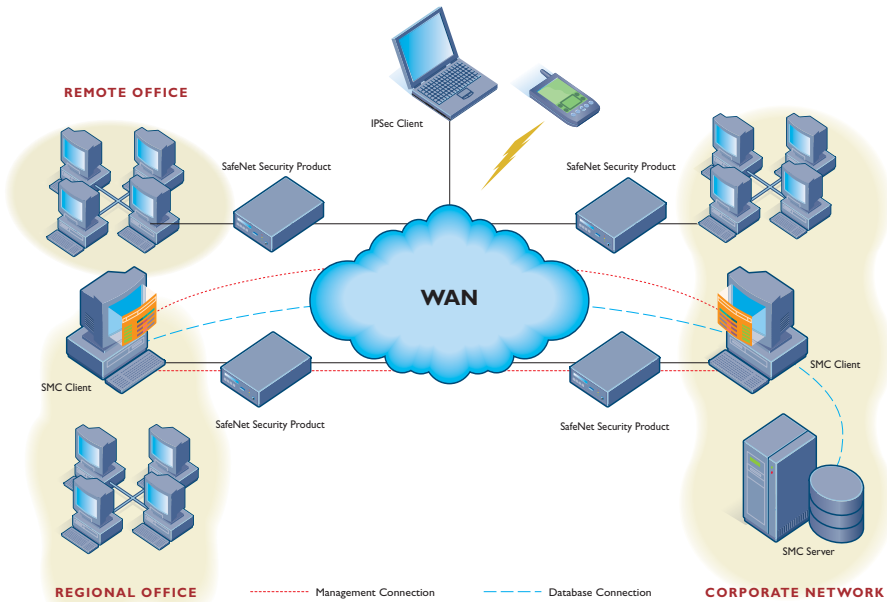
SafeEnterprise™ Security Management Center (SMC) 1.2 from SafeNet redefines network security management with a robust, web-based, management platform that authenticates any number of SafeNet solutions deployed on the enterprise network. SMC 1.2 remotely configures, monitors, and performs firmware updates for SafeNet network security products. The SMC 1.2 automatically manages any product that has been integrated into the extensible management center architecture. By providing a single management element to administer security across heterogeneous networks, the SMC 1.2 reduces the cost of network security management.

With SafeEnterprise Security Management Center 1.2's point-and-click interface, and configuration wizards, it's easy to visualize, configure, modify, and manage network security. What's more, SafeNet security products enable organizations to implement a broad range of security policies that can limit access to specific devices or provide unlimited access to the entire network. The management communication between SMC and SafeNet encryptors is through highly secure channel communications, eliminating the possibility of spoofing or eavesdropping. The SNMP architecture provides interoperability with enterprise network management software suites for additional device and network monitoring options.



The SafeEnterprise Security Management Center 1.2 is the only true enterprise network security management application that provides centralized security management for SafeEnterprise™ SONE™ Encryptors, SafeEnterprise™ Conversion Encryptors, SafeEnterprise™ ATM Encryptors, SafeEnterprise™ and Link Encryptors with network security solutions. The internal, high-performance, relational database provides high availability, and the client-server design allows flexible management for remote administration. With the SMC, SafeNet provides an easy to use, flexible, and robust network security management platform that scales to networks of any size. To complete the security model, the SMC maintains a complete audit trail of network security activities, including administrator operations, user logons and logoffs.

Technical Specifications



Supported Devices and Clients

- SafeEnterprise™ Ethernet Encryptors
- SafeEnterprise™ SONET Encryptors
- SafeEnterprise™ Conversion Encryptors
- SafeEnterprise™ ATM Encryptors
- SafeEnterprise™ Link Encryptors

Management Protocols

- SNMP v1, v2, & v3
- SNMP MIB-II, plus secured SafeNet extensions
- IPsec management communications

Security Standards

- FIPS 140-2 Level 2 and Level 3 (management communications)

SMC Atlas Clients Requirements

- Solaris 9
- Processor: 1GHz
- Memory: 512 MB
- Firefox 2.x and above

SMC Atlas Server System Requirements

- 1.5 Ghz UltraSPARC III
- Solaris 9
- High-resolution color monitor (1024 x 768)
- 2 GB RAM
- 160 GB hard drive
- CD-ROM drive
- 3.5" floppy drive
- Network interface card
- Mouse/keyboard

Service and Support

- Worldwide sales, service, and distribution
- 30-day software warranty
- 1yr applicable hardware warranty
- Extended maintenance and support

Corporate Headquarters: 4690 Millennium Drive, Belcamp, Maryland 21017 USA
Tel.: +1 410 931 7500 or 800 533 3958, Fax: +1 410 931 7524, Email: info@safenet-inc.com

EMEA Headquarters: Tel.: + 44 (0) 1276 608 000, Email: info@uk.safenet-inc.com

APAC Headquarters: Tel: +852-3157-7111, Email: info.apac@safenet-inc.com

For all office locations and contact information, please visit www.safenet-inc.com/company/contact.asp

www.safenet-inc.com

©2007 SafeNet, Inc. All rights reserved. SafeNet and SafeNet logo are registered trademarks of SafeNet. All other product names are trademarks of their respective owners.

