

SafeNet SONET Encryptor

SONET Encryptor for OC3, OC12, OC48, and OC192 Networks



Key Features

*Ideal for high-performance,
time-sensitive networks*

Full-duplex wire-speed throughput

Extremely low latency

No additional network overhead

*World's most mature and secure
SONET encryptor*

*Configurable as a path or
line encryptor*

*Data encryption with
AES-256 algorithm*

*Fully supports both SONET and
SDH architectures*

Flexible XFP/SFP optical interfaces

*Management through the
SafeNet Security
Management Center II*

*Designed to international
security standards*

FIPS PUB 140-2
• OC192 (Level 2)
• OC48/12/3 (Level 3)

Common Criteria EAL4

The SafeNet SONET Encryptor is a high-performance, dedicated security solution designed to protect 10 Gbps and below SONET/SDH networks. It integrates easily and transparently into SONET/SDH networks and performs at wire-speed throughput, encrypting user data with the AES-256 algorithm. It's extremely low latency makes it ideal for even the most demanding real-time, latency-sensitive network applications.

SafeNet Security Management Center II (SMCII) allows remote, centralized administration of SafeNet's entire family of network encryption devices and is scalable to meet the needs of the world's largest organizations. SMCII can manage the SONET encryptor in-band through the SONET network or out-of-band via its dedicated Ethernet management port. Status of the appliance is visibly apparent through front panel LEDs and a two line, 20-character LCD display. The LEDs indicate the status of the local and network interfaces, power, temperature, battery status, system operation, secure status, and interface transmission and reception.

Both path and line SONET encryption are supported at rates up to 10 Gbps. The 10G encryptor supports OC192 line and STS-192c path. The OC48 encryptor supports OC48 line, STS-48c path and STS-12c paths. The OC12 encryptor supports OC12 line, STS-12c path, STS-3c paths, and STS-1 paths. For added security, each encrypted path uses an independent encryption key pair. In addition, section, line, and path overhead bytes can be selectively encrypted, zeroised, regenerated, or bypassed.

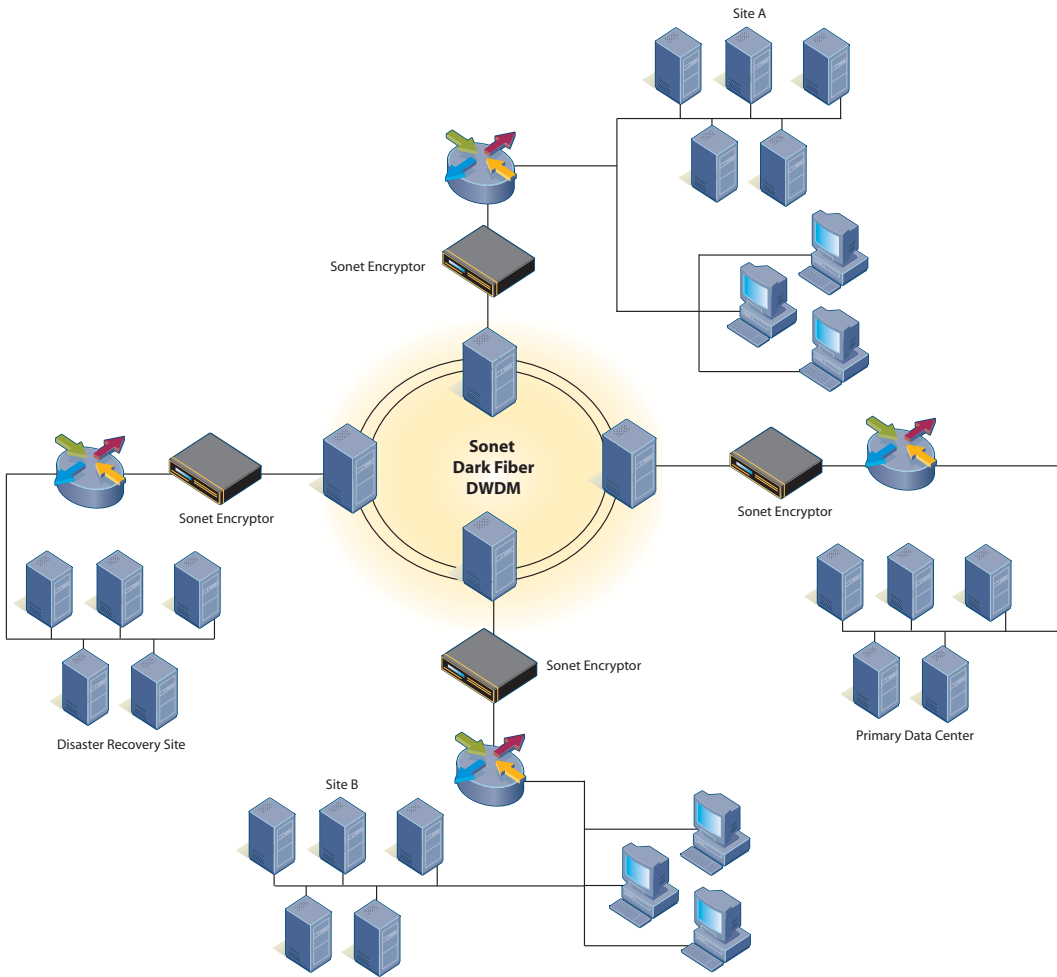
The SONET Encryptor offers superior physical security with its heavy-gauge, extruded sheet metal construction. The chassis is tamper evident and the device provides tamper-proof storage of encryption keys and user passwords. In addition, the SONET Encryptor meets all regulatory standards, including FCC Part 15 Class A, UL, TUV, and CE.

The 10G OC192 SONET Encryptor comes in a three rack unit (3RU) chassis (130mm) with redundant -48VDC power supplies. The OC48/12/3 SONET Encryptor comes in a compact single rack unit (1RU) high chassis (41mm), with both AC and DC power supply options.

Utilizing the flexibility provided by small form factor pluggable transceivers (XFPs/SFPs), the SONET Encryptor integrates seamlessly into all customer networks. For management interfaces, it has RJ-45 10/100 Ethernet and RS-232 serial management ports.

The SONET Encryptor has a one year (12 month) standard warranty. Extended support and maintenance contracts can be tailored to meet the requirements of individual customers. Support is available online through our customer support Web site, Express Service Center, and Customer Connection Center.





Technical Specifications

Network Interfaces

- OC192/STM64 (10 Gbps)
- OC48/STM16 (2.5 Gbps)
- OC12/STM4 (622 Mbps)
- OC3/STM1 (155 Mbps)

Cryptography

- AES algorithm – 256-bit key
- Automatic crypto resynchronization in less than 10ms

Key Management

- ATM Forum Security Specification v1.1 Key Exchange
- RSA public key
- Automatic session key update

Performance

- Constant non-cumulative delay of less than 10 μ s
- Full-duplex operation at all line speeds

Audit

- Event Log
- Alarms
- Interface status
- Audit Log
- Date and time of secure connection
- Configuration changes

Environmental

- 5° to 40° C operating temperature
- -10° to 60° C non-operating temperature
- 0 to 80% RH @ 40° C operating humidity
- 95% RH @ 40° C non-operating humidity

Electrical

- 90VAC to 250VAC, 110W maximum, 47-63Hz
- -48VDC, 40W maximum

Mechanical

Height

- OC48/12/3 - 41mm (1RU)
- OC192 - 130mm (3RU)
- Width – 435mm
- (19" rack-mountable)
- Depth – 285mm

Weight

- OC48/12/3 - 4.5kg
- OC192 – 9.5kg



www.safenet-inc.com

Corporate Headquarters:

4690 Millennium Drive, Belcamp, Maryland 21017 USA
Tel.: +1 410 931 7500 or 800 533 3958, Fax: +1 410 931 7524,
Email: info@safenet-inc.com

EMEA Headquarters:

Tel.: + 44 (0) 1276 608 000, Email: info.emea@safenet-inc.com

APAC Headquarters:

Tel: + 852 3157 7111, Email: info.apac@safenet-inc.com

For all office locations and contact information, please visit
www.safenet-inc.com/company/contact.asp

©2008 SafeNet, Inc. All rights reserved. SafeNet and SafeNet logo are registered trademarks of SafeNet. All other product names are trademarks of their respective owners.
PB-Sonet Encryptor OC3, OC12, OC48, and OC192 Networks-08.05.08