

F-Secure Client Security

Quick Installation Guide

Contents

Chapter 1: Introduction.....	5
Chapter 2: Installing Client Security.....	7
System requirements.....	8
Stand-alone installation.....	9
Before you install	9
Installation steps.....	9
Remote installation.....	11
Uninstall other antivirus programs.....	11
Install Policy Manager	11
Install Client Security remotely	11
Local installation and Policy Manager.....	12
Uninstall other antivirus programs.....	12
Installation steps.....	12
Configure the product using Policy Manager	13
Chapter 3: Installing Policy Manager.....	15
System requirements.....	16
Policy Manager Server.....	16
Policy Manager Console.....	16
Product registration.....	18
Installing the product.....	19
Begin installing from CD.....	19
Select components to install.....	20
Complete installation of the product.....	24
Run Policy Manager Console.....	25
Remote deployment of other F-Secure products.....	32

Introduction

This guide describes how to get started with F-Secure Client Security and includes installation instructions for:

- Client Security
- Policy Manager

For detailed instructions on the installation and use of the products, refer to the applicable product manuals included on the installation CD. The most recent versions of the manuals are also available in PDF format on our web site at

http://www.f-secure.com/small_businesses/support_and_services/manuals.html.

Installing Client Security

Topics:

- *System requirements*
- *Stand-alone installation*
- *Remote installation*
- *Local installation and Policy Manager*

The following information is provided here:

- System requirements
- Remote and local installation options for corporate computers

System requirements

Read the following before starting to use the product.

The recommended requirements for installing and using the product on your computer are:

System requirements

Processor:

- On Windows Vista and Windows 7: Intel Pentium 4 2 GHz or higher
- On Windows XP: Intel Pentium III 1 GHz or higher

Operating system:

- Windows 7 32-bit and 64-bit
- Windows Vista 32-bit and 64-bit
- Windows XP SP2 or newer

Memory:

- On Windows Vista and Windows 7: 1 GB of RAM or more
- On Windows XP: 512 MB of RAM or more

Disk space:

800 MB free hard disk space

Display:


- On Windows Vista and Windows 7: 16 bit or more (65000 colors)
- On Windows XP: 16 bit, 65000 colors or more

Internet connection:

Required to validate your subscription and receive updates

Stand-alone installation

Client Security can be installed individually on each workstation, which is the recommended method for small networks with 2 - 5 workstations.

 **Note:** When installing Client Security for a stand-alone installation, select **Locally managed stand-alone installation** when the management selection step is displayed during setup.

Before you install

Read the following before installing the product.

- If you are using a previous version of F-Secure Internet Security or F-Secure Anti-Virus, you can install this product directly. Follow the instructions in “Installation Steps”.
- If you have an evaluation version of F-Secure Internet Security 2010 or F-Secure Anti-Virus 2010 on your computer, and you have purchased the licensed version, you can start using it after you enter the subscription key.

To enter the subscription key:

1. On the main page, click **Tasks**.
2. Click **My subscription**.
3. Select **Enter new subscription key...**
4. In the dialog box that opens, enter your new subscription key and click **Register**.


If you received your subscription key by e-mail, you can copy the key from the e-mail message and paste it into the field.

Installation steps


You need the product CD, a valid subscription key and an Internet connection. If multiple users share and use the computer, log on with administrator privileges to install this product.

To install the software:

1. Insert the Installation CD.
The installation should start automatically. If it does not, go to Windows Explorer, double-click on the CD-ROM icon and double-click the `setup.exe` file to start the installation.
The first installation dialog box appears.
2. Select the installation language and click **Next** to continue.
3. Read the license agreement. To accept the agreement and to continue, click **Accept**.
4. Enter your subscription key and click **Next** to continue.

 **Note:** If you want to evaluate the product, leave the **My subscription key is** field empty and click **Next**. In the **Evaluation Options** dialog box, select the service to evaluate.

- If you purchased the product on a CD from a shop, you can find the subscription key on the cover of the Quick Installation Guide.
- If you downloaded the product from the F-Secure eStore, the subscription key is included in the confirmation e-mail of the purchase order.

 **Note:** Use only the subscription key delivered with the product. You can use the subscription key for the number of installations your license is for (see the ‘F-Secure License’ note in this guide). If you have problems in registering, please contact F-Secure Technical Support.

5. Select the installation type:


- Automatic installation: The product is installed automatically. Existing security products may be automatically replaced. The product is installed to the default directory.
- Step by step installation: You can make selections during the installation. You can for example, change the installation directory. However, we recommend using the default directory.

6. Click **Next**.

7. After the installation is complete, remove the Installation CD.

8. The computer restarts automatically. To restart immediately, select **Restart now**.

9. After the restart, the product tries to connect to the Internet to validate your subscription and download updates. Make sure that you are connected to the Internet. Downloading these major updates may take some time. When the updates have been downloaded, the protection is up to date. The latest updates ensure the best protection.

 **Tip:** To learn more about the product, you can access the online help by clicking the **Help** button in the product. You can find the online help also on the Installation CD.

Remote installation

Remote installation with Policy Manager is recommended for networks with more than 5 workstations.

If you are not familiar with Policy Manager, refer to the Policy Manager Administrator's Guide included on the installation CD.

 **Note:** Policy Manager has two user interfaces; **Advanced mode** and **Anti-virus mode**. You should use **Anti-virus mode** with Client Security.

Uninstall other antivirus programs

Before you begin installing Client Security, you should remove any other antivirus programs currently installed on the workstations.

To uninstall other antivirus programs:

1. Select the currently installed programs in the **Start > Settings > Control Panel > Add/Remove Programs** dialog.
2. Remove any related components.
Some programs may have several related components, which may need to be uninstalled separately. If you encounter problems, refer to the user documentation for the currently installed antivirus program.
3. Restart your computer.

Install Policy Manager

The steps given here are general guidelines for installing Policy Manager and preparing the domain structure.

1. Install Policy Manager.
2. Create the policy domain structure.

Install Client Security remotely


The following steps are a general guideline for remote installation of Client Security.

1. Use the **Autodiscover Windows hosts** operation to install Client Security to the workstations.
Policy Manager Console will use a remote installation wizard to configure the Client Security installation.
2. Add new workstations to a suitable policy domain when the installation is complete.
3. Configure the Client Security settings for the workstations.
The domain-level settings are shared by all workstations in the policy domain.
4. Distribute the policies.
The managed workstations will receive the updated policy the next time they connect to the server.

Local installation and Policy Manager

Local installation is recommended if you need to install Client Security locally on a workstation that is otherwise centrally managed by Policy Manager.

You must have Policy Manager already installed before you can continue with the installation.

 **Note:** When installing Client Security to be managed by Policy Manager, select **Central management with F-Secure Policy Manager** when the management selection step is displayed during setup. You will also be asked to provide the location of the Policy Manager public key (`admin.pub`, created when installing Policy Manager Console) and the network address of the Policy Manager Server in use. These details are required to ensure secure communication with Policy Manager.

Uninstall other antivirus programs

Before you begin installing Client Security, you should remove any other antivirus programs currently installed on the workstations.

To uninstall other antivirus programs:

1. Select the currently installed programs in the **Start > Settings > Control Panel > Add/Remove Programs** dialog.
2. Remove any related components.
Some programs may have several related components, which may need to be uninstalled separately. If you encounter problems, refer to the user documentation for the currently installed antivirus program.
3. Restart your computer.

Installation steps

You need the product CD, a valid subscription key and an Internet connection. If multiple users share and use the computer, log on with administrator privileges to install this product.


To install the software:

1. Insert the Installation CD.


The installation should start automatically. If it does not, go to Windows Explorer, double-click on the CD-ROM icon and double-click the `setup.exe` file to start the installation.

The first installation dialog box appears.

2. Select the installation language and click **Next** to continue.
3. Read the license agreement. To accept the agreement and to continue, click **Accept**.
4. Enter your subscription key and click **Next** to continue.

 **Note:** If you want to evaluate the product, leave the **My subscription key is** field empty and click **Next**. In the **Evaluation Options** dialog box, select the service to evaluate.

- If you purchased the product on a CD from a shop, you can find the subscription key on the cover of the Quick Installation Guide.
- If you downloaded the product from the F-Secure eStore, the subscription key is included in the confirmation e-mail of the purchase order.

 **Note:** Use only the subscription key delivered with the product. You can use the subscription key for the number of installations your license is for (see the 'F-Secure License' note in this guide). If you have problems in registering, please contact F-Secure Technical Support.

5. Select the installation type:


- Automatic installation: The product is installed automatically. Existing security products may be automatically replaced. The product is installed to the default directory.
- Step by step installation: You can make selections during the installation. You can for example, change the installation directory. However, we recommend using the default directory.

6. Click **Next**.

7. After the installation is complete, remove the Installation CD.

8. The computer restarts automatically. To restart immediately, select **Restart now**.

9. After the restart, the product tries to connect to the Internet to validate your subscription and download updates. Make sure that you are connected to the Internet. Downloading these major updates may take some time. When the updates have been downloaded, the protection is up to date. The latest updates ensure the best protection.

 **Tip:** To learn more about the product, you can access the online help by clicking the **Help** button in the product. You can find the online help also on the Installation CD.

Configure the product using Policy Manager

The steps given here are general guidelines for configuring Client Security with Policy Manager.

1. Add new workstations to a suitable policy domain when the installation is complete.
2. Configure the Client Security settings for the workstations.

The domain-level settings are shared by all workstations in the policy domain.

3. Distribute the policies.

The managed workstations will receive the updated policy the next time they connect to the server.

Installing Policy Manager

Topics:

- [System requirements](#)
- [Product registration](#)
- [Installing the product](#)
- [Remote deployment of other F-Secure products](#)

This section is a quick reference for installing Policy Manager from the installation CD. The following information is provided:

- System requirements.
- User interface modes.
- Steps for installing Policy Manager components on a single computer.
- Remote deployment of F-Secure products to corporate computers.

System requirements

This section provides the system requirements for both Policy Manager Server and Policy Manager Console.

Policy Manager Server

In order to install Policy Manager Server, your system must meet the minimum requirements given here.

Operating system:	Microsoft Windows: <ul style="list-style-type: none">• Microsoft Windows Server 2003 SP1 or higher (32-bit); Standard, Enterprise, Web Edition or Small Business Server editions• Windows Server 2003 SP1 or higher (64-bit); Standard or Enterprise editions• Windows Server 2008 SP1 (32-bit); Standard, Enterprise or Web Server editions• Windows Server 2008 SP1 (64-bit); Standard, Enterprise, Web Server, Small Business Server or Essential Business Server editions• Windows Server 2008 R2; Standard, Enterprise or Web Server editions
Processor:	P4 2 GHz processor or faster. Managing more than 5000 hosts or using Web Reporting requires P4 3 GHz level processor or faster.
Memory:	512 MB RAM, 1 GB RAM recommended. Managing more than 5000 hosts or using Web Reporting requires 1 GB RAM.
Disk space:	5 GB of free hard disk space; 8 GB or more is recommended. The disk space requirements depend on the size of the installation. In addition to this it is recommended to allocate about 1 MB per host for alerts and policies. The actual disk space consumption per host is hard to anticipate, since it depends on how the policies are used and how many installation packages are stored.
Network:	10 Mbit network. Managing more than 5000 hosts requires a 100 Mbit network.

Policy Manager Console

In order to install Policy Manager Console, your system must meet the minimum requirements given here.

Operating system:	<p>Microsoft Windows:</p> <ul style="list-style-type: none">• Windows XP Professional (SP2 or higher)• Windows Vista (32-bit or 64-bit) with or without SP1; Business, Enterprise or Ultimate editions• Windows 7 (32-bit or 64-bit); Professional, Enterprise or Ultimate editions• Microsoft Windows Server 2003 SP1 or higher (32-bit); Standard, Enterprise, Web Edition or Small Business Server editions• Windows Server 2003 SP1 or higher (64-bit); Standard or Enterprise editions• Windows Server 2008 SP1 (32-bit); Standard, Enterprise or Web Server editions• Windows Server 2008 SP1 (64-bit); Standard, Enterprise, Web Server, Small Business Server or Essential Business Server editions• Windows Server 2008 R2; Standard, Enterprise or Web Server editions
Processor:	<p>P4 2 GHz processor or faster.</p> <p>Managing more than 5000 hosts requires P4 3 GHz processor or faster.</p>
Memory:	<p>512 MB of RAM.</p> <p>Managing more than 5000 hosts requires 1 GB of memory.</p>
Disk space:	<p>200 MB of free hard disk space.</p>
Display:	<p>Minimum 16-bit display with resolution of 1024x768 (32-bit color display with 1280x1024 or higher resolution recommended).</p>
Network:	<p>10 Mbit network.</p> <p>Managing more than 5000 hosts requires a 100 Mbit network.</p>

Product registration

You have the option of providing F-Secure with information regarding the use of Policy Manager by registering your product.

The following questions and answers provide some more information about registering your installation of Policy Manager. You should also view the F-Secure license terms (http://www.f-secure.com/en_EMEA/estore/license-terms/) and privacy policy (http://www.f-secure.com/en_EMEA/privacy.html).

Why does F-Secure collect data?

In order to improve our service, we collect statistical information regarding the use of F-Secure products. To help F-Secure provide better service and support, you can allow us to link this information to your contact information. To allow this, please enter the customer number from your license certificate during the installation of Policy Manager.

What information is sent?

We collect information that cannot be linked to the end user or the use of the computer. The collected information includes F-Secure product versions, operating system versions, the number of managed hosts and the number of disconnected hosts. The information is transferred in a secure and encrypted format.

What do I benefit from submitting information to F-Secure?

When you contact our support, we can provide a solution to your problem more quickly based on the information collected. In addition, with this information we can further develop our product and services to match the needs of our customers even better.

Where is the information stored and who can access it?

The data is stored in F-Secure's highly secured data center, and only F-Secure's assigned employees can access the data.

Installing the product

This section explains the steps required to install Policy Manager.

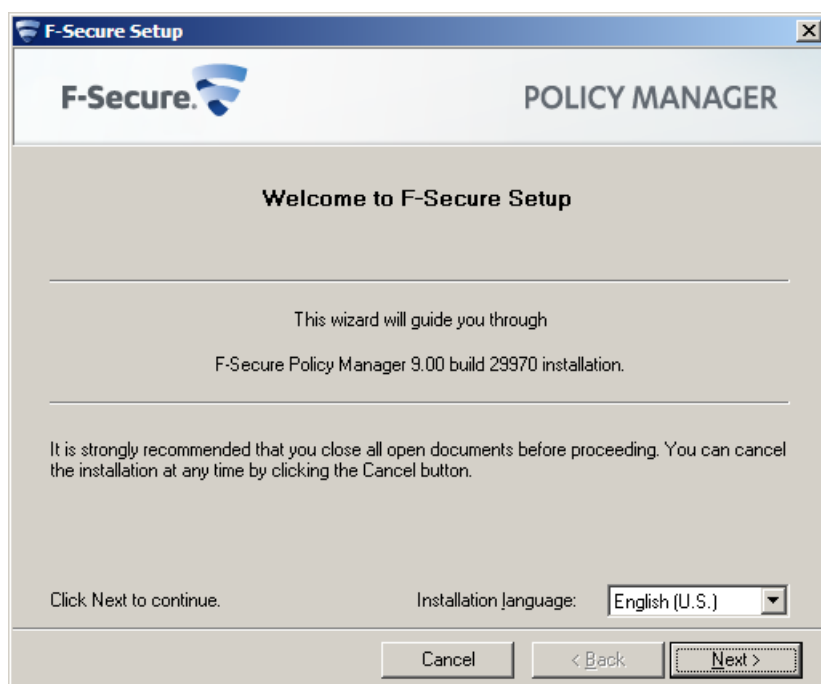
Here you will find instructions for installing the main product components; Policy Manager Server and Policy Manager Console.

Begin installing from CD

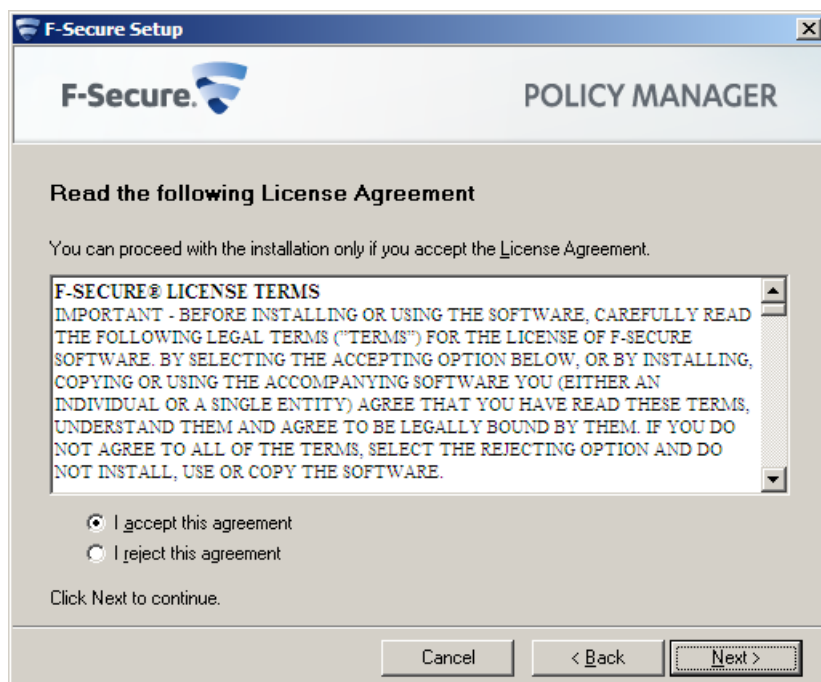
The first stage in installing Policy Manager is to run the product CD.

To begin installing the product:

1. Insert the F-Secure CD in your CD-ROM drive.
2. Select **Corporate use** and click **Next** to continue.
3. Go to the **Install or update managed software** menu and select **F-Secure Policy Manager**. Setup begins.



4. Select the installation language from the drop-down menu and click **Next** to continue.
5. Read the license agreement information, then select **I accept this agreement** and click **Next** to continue.

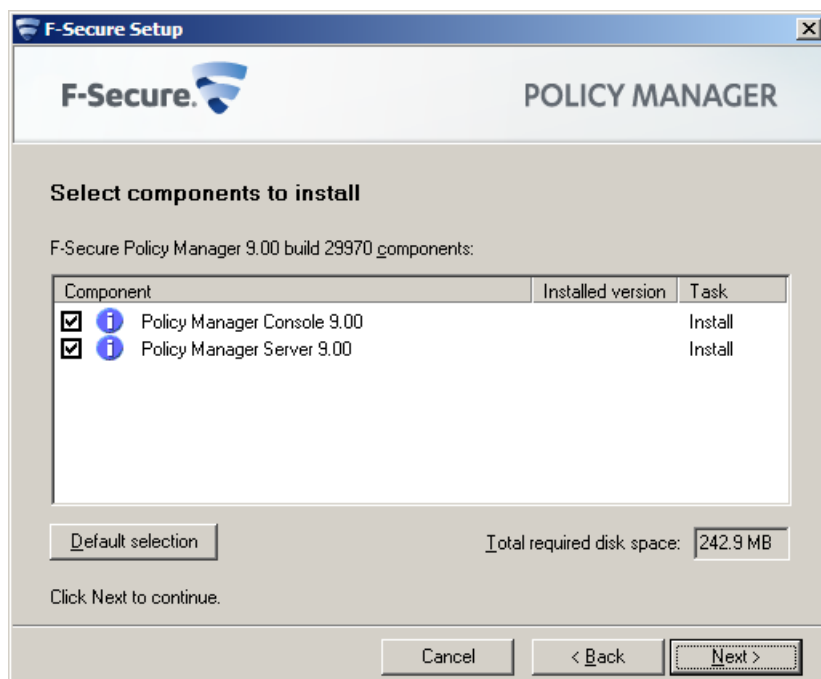


Select components to install

The next stage is to select the product components to install.

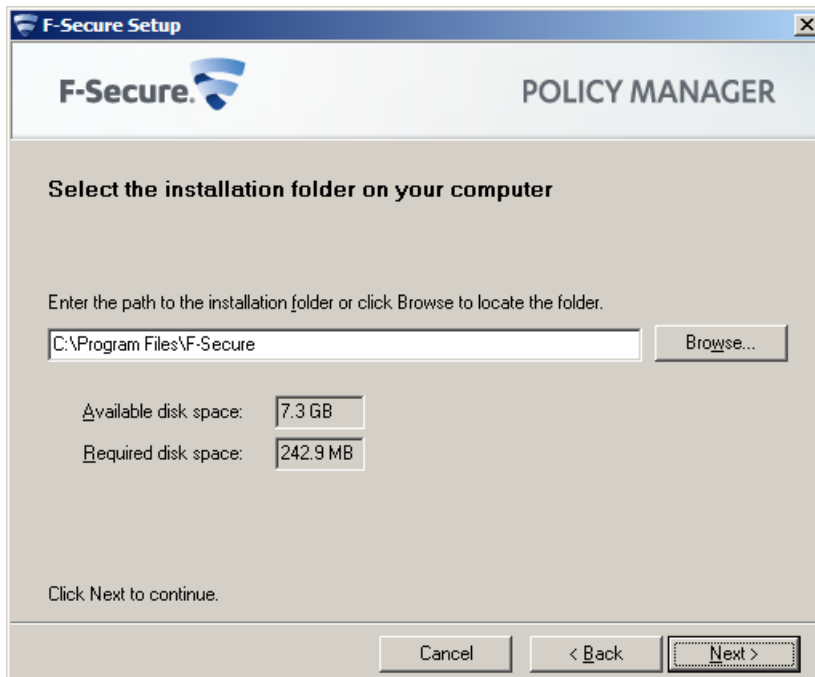
To continue installing the product:

1. Select the components to install and click **Next** to continue.




- Select both Policy Manager Server and Policy Manager Console to install both components on the same machine.
- Select Policy Manager Server if you want to install Policy Manager Console on a separate machine.

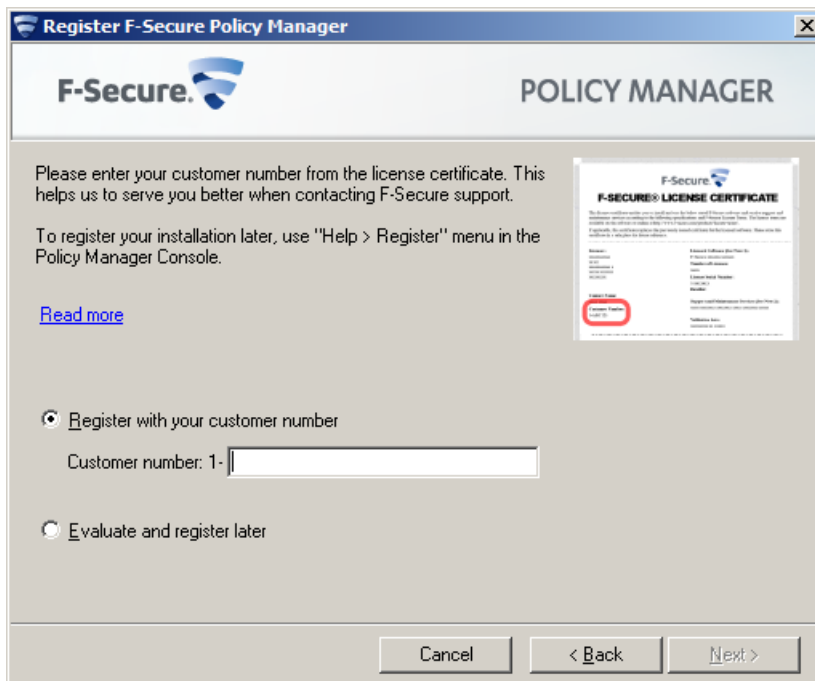
2. Choose the destination folder and then click **Next**.



It is recommended to use the default installation directory. If you want to install the product in a different directory, you can click **Browse** and select a new directory.

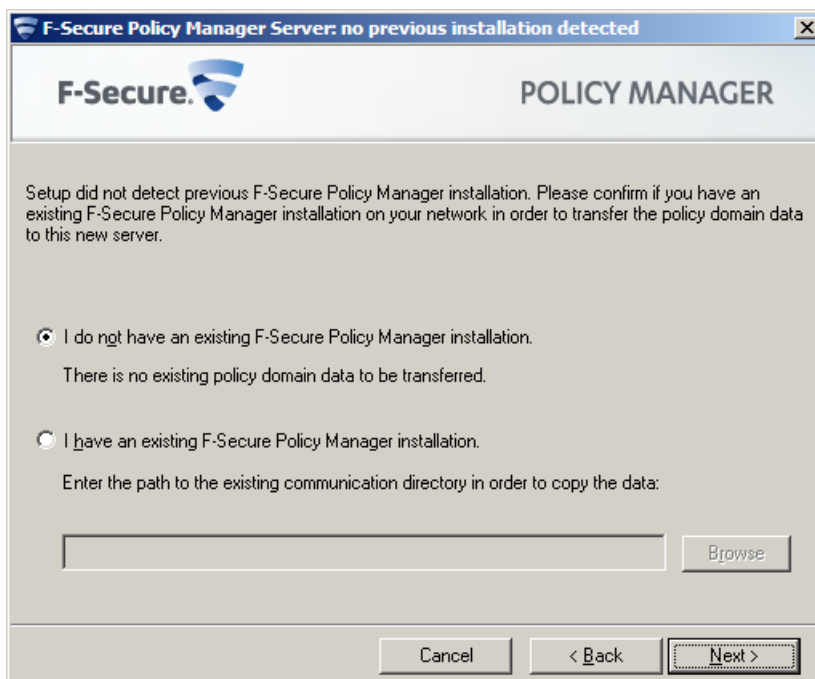
 **Note:** If you have Management Agent installed on the same machine, this window will not be shown.

3. Enter your customer number and then click **Next**.



You can find your customer number in the license certificate provided with the product.

4. If setup does not detect any previous installation of Policy Manager, it asks you to confirm if a previous installation of the product exists:



- If a previous version has been installed, select **I have an existing F-Secure Policy Manager installation**. Enter the communication directory path of the installed Policy Manager. The contents of this directory will be copied under <server installation directory>\commdir\ (communication directory under the Policy Manager Server installation directory), and this will be the directory that

Policy Manager Server will use as a repository. You can use the previous `commdir` as a backup, or you can delete it once you have verified that Policy Manager Server is correctly installed.

- If no previous version has been installed, select **I do not have an existing F-Secure Policy Manager**. This will not require an existing `commdir`, and will create an empty `commdir` in the default location (under <F-Secure Policy Manager 5 installation directory>\commdir).

5. Click **Next** to continue.
6. Click **Next** to continue.
7. Select the Policy Manager Server modules to enable:

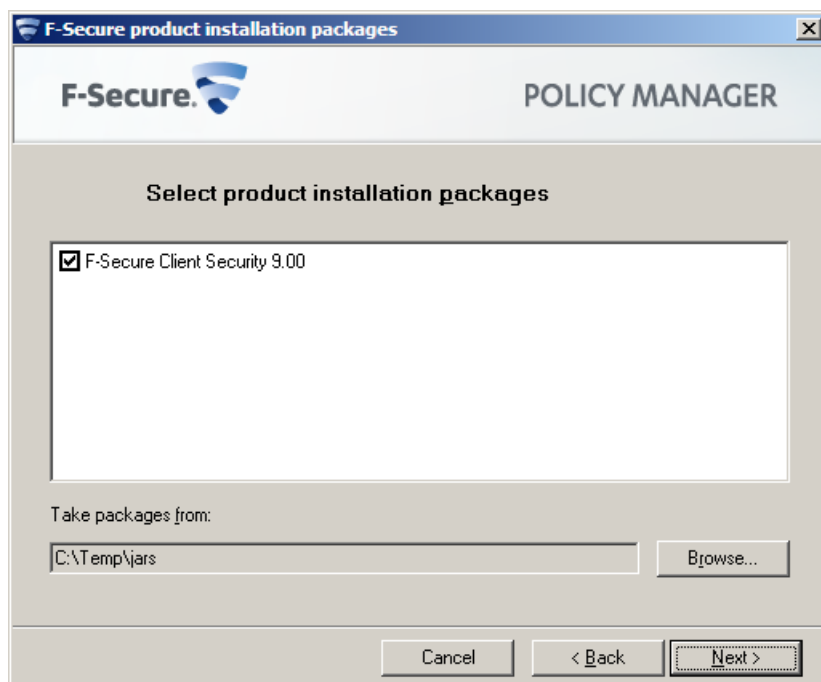
- The **Host** module is used for communication with the hosts. The default port is 80.
 - The **Administration** module is used for communication with Policy Manager Console. The default HTTP port is 8080.
- Note:** If you want to change the default port for communication, you will also need to change the **HTTP Port Number** setting in Policy Manager Console.

By default, access to the **Administration** module is restricted to the local machine. This is the most secure way to use the product. When using a connection over a network, please consider securing the communication with F-Secure SSH.

- The **Web Reporting** module is used for communication with Web Reporting. Select whether it should be enabled. Web Reporting uses a local socket connection to the **Administration** module to fetch server data. The default port is 8081.

By default, access to Web Reporting is allowed also from other computers. If you want to allow access only from this computer, select **Restrict access to the local machine**.

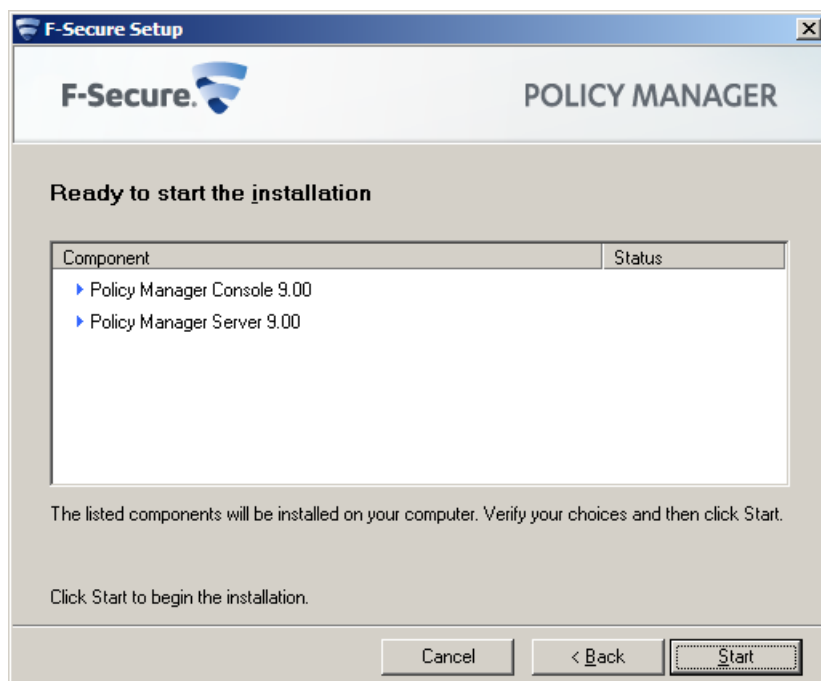
8. Click **Next** to continue.
9. Select the product installation package(s) to install from the list of available packages, then click **Next** to continue.



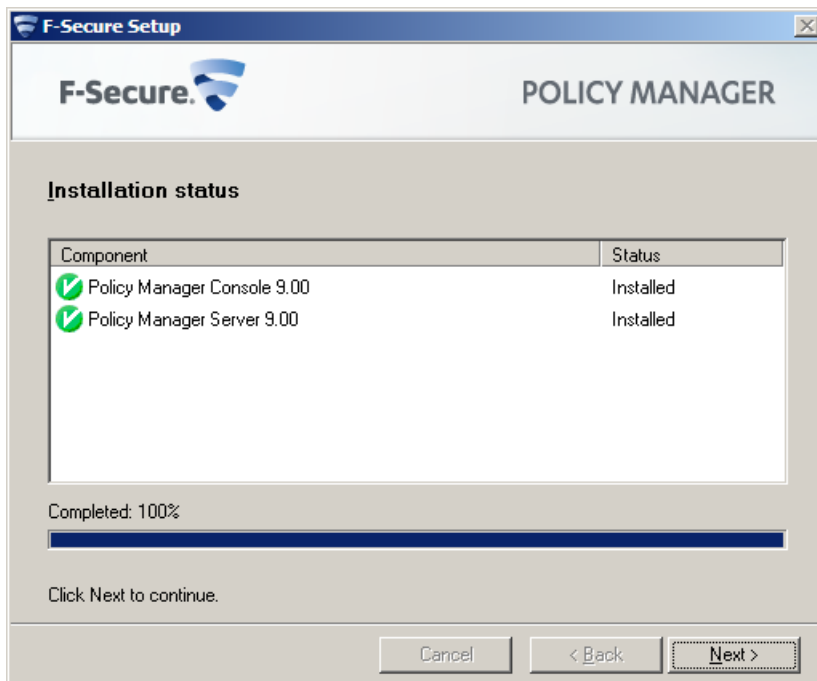
Complete installation of the product

The next stage is to complete the installation of the product.

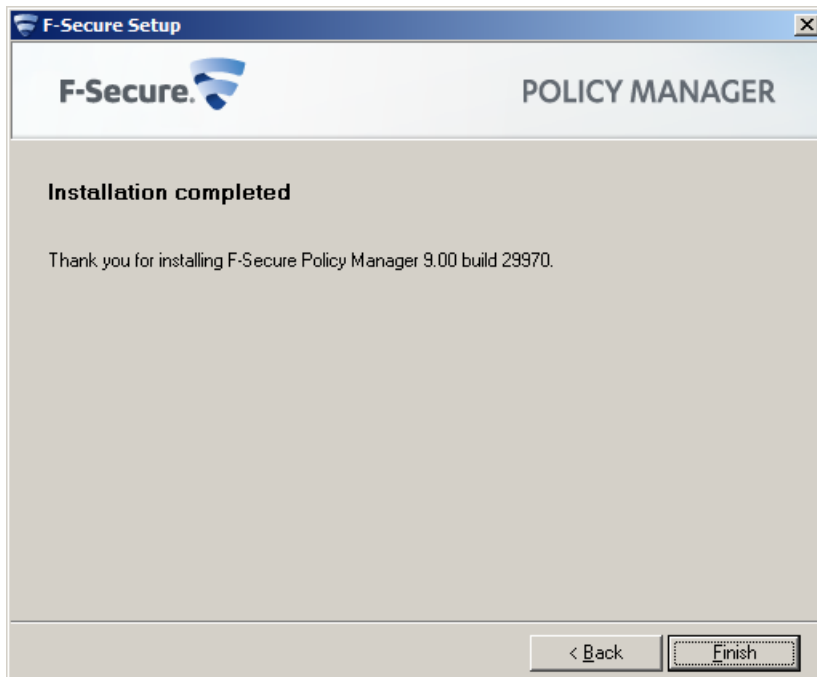
1. Review the changes that setup is about to make, then click **Start** to start installing the selected components.



When completed, the setup shows whether all components were installed successfully.



2. Click **Finish** to complete the installation.



3. Restart your computer if you are prompted to do so.

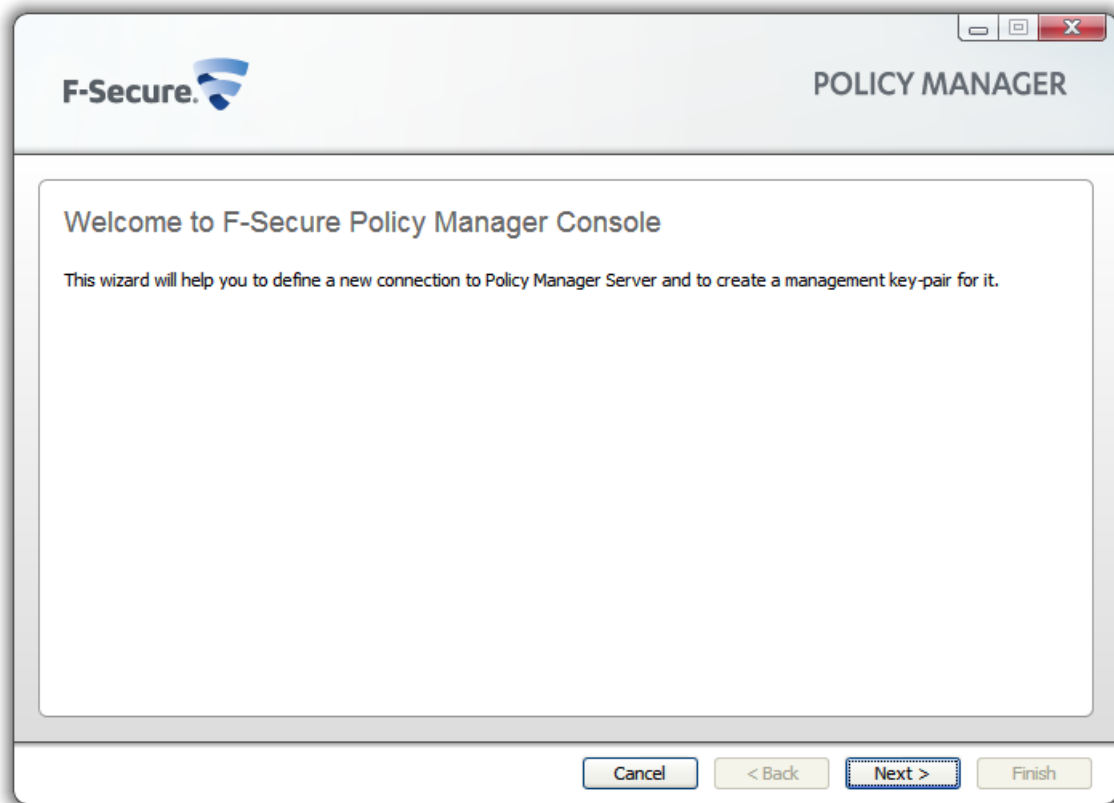
Run Policy Manager Console

The last stage in setting up the product is to run Policy Manager Console for the first time.

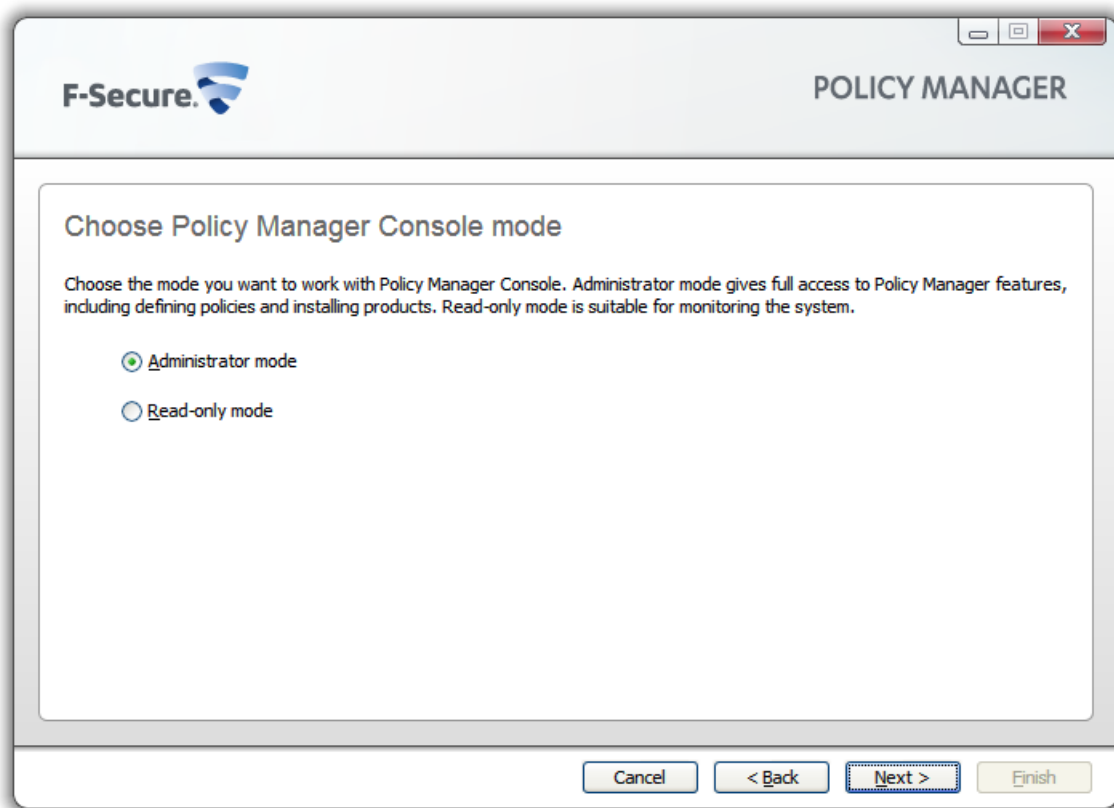
To run Policy Manager Console for the first time:

1. Run Policy Manager Console by selecting **Start** ► **Programs** ► **F-Secure Policy Manager Console** ► **F-Secure Policy Manager Console**.

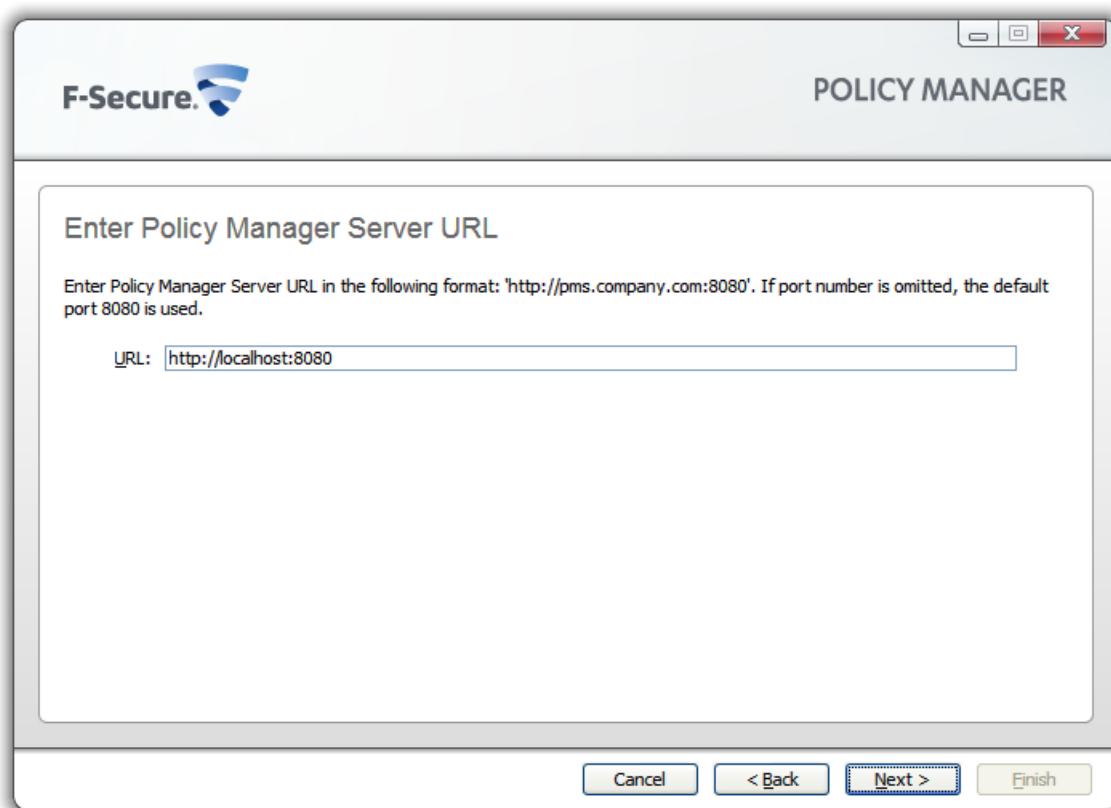
When Policy Manager Console is run for the first time, the **Console Setup Wizard** collects the information needed to create an initial connection to the server. The first page of the Policy Manager Console setup wizard summarizes the installation process.



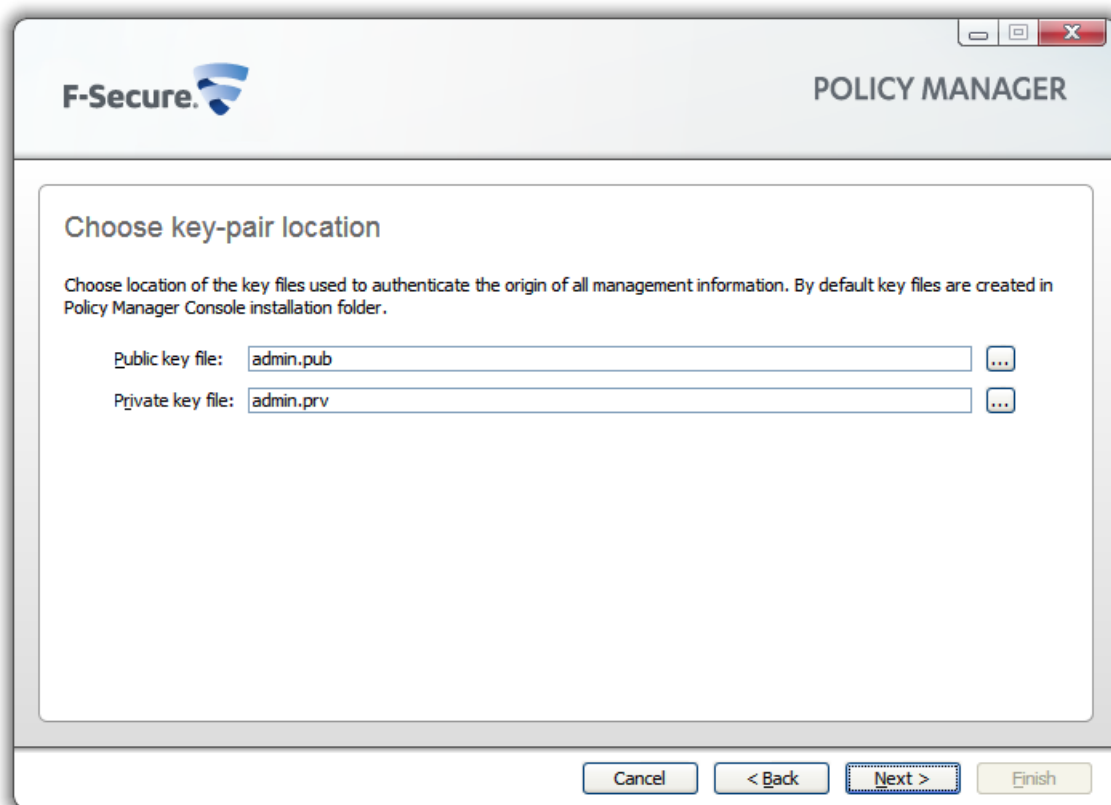
2. Click **Next** to continue.
3. Select your user mode according to your needs:



- **Administrator mode** - enables all administrator features.
 - **Read-only mode** - allows you to view administrator data, but no changes can be made. If you select **Read-only mode**, you will not be able to administer hosts. To change to **Administrator mode**, you will need the `admin.pub` and `admin.prv` administration keys.
4. Click **Next** to continue.
 5. Enter the address of the Policy Manager Server that is used for communicating with the managed hosts, then click **Next** to continue.




6. Enter the path where the administrator's public key and private key files will be stored.

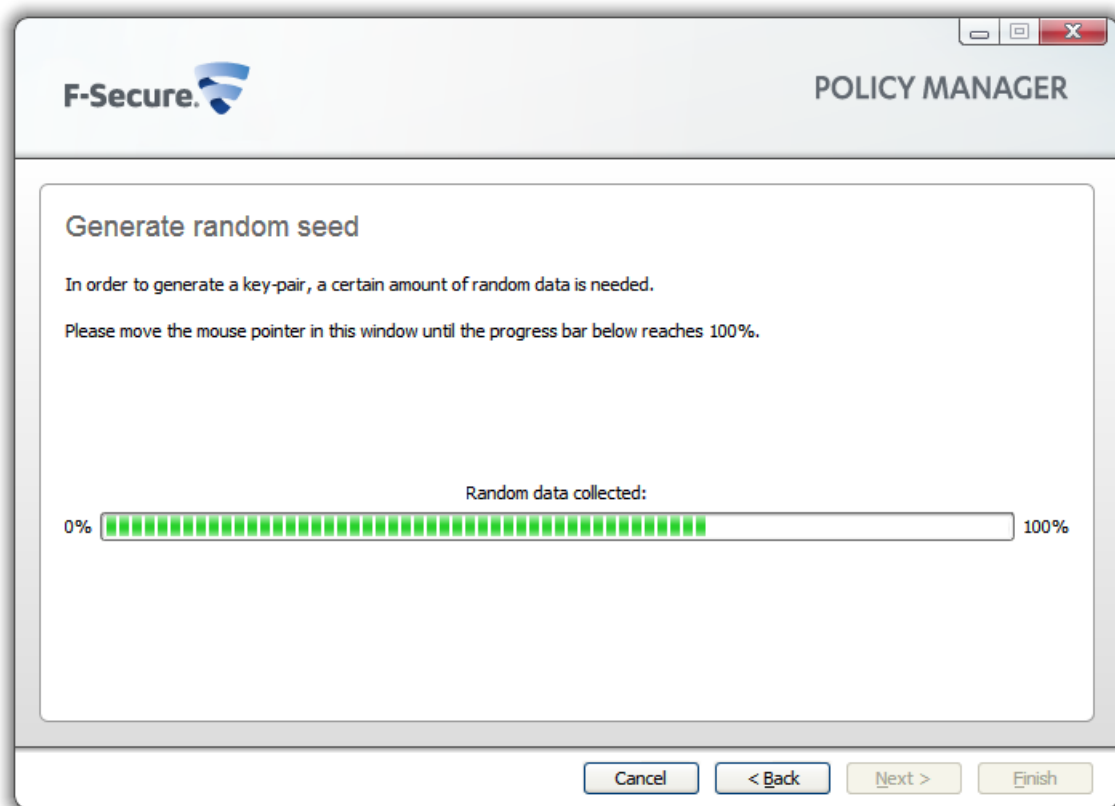


By default, key files are stored in the Policy Manager Console installation directory: Program Files\F-Secure\Administrator.

7. Click **Next** to continue.

 **Note:** If the key-pair does not already exist, it will be created later in the setup process.

8. Move your mouse cursor around in the window to initialize the random seed used by the management key-pair generator.



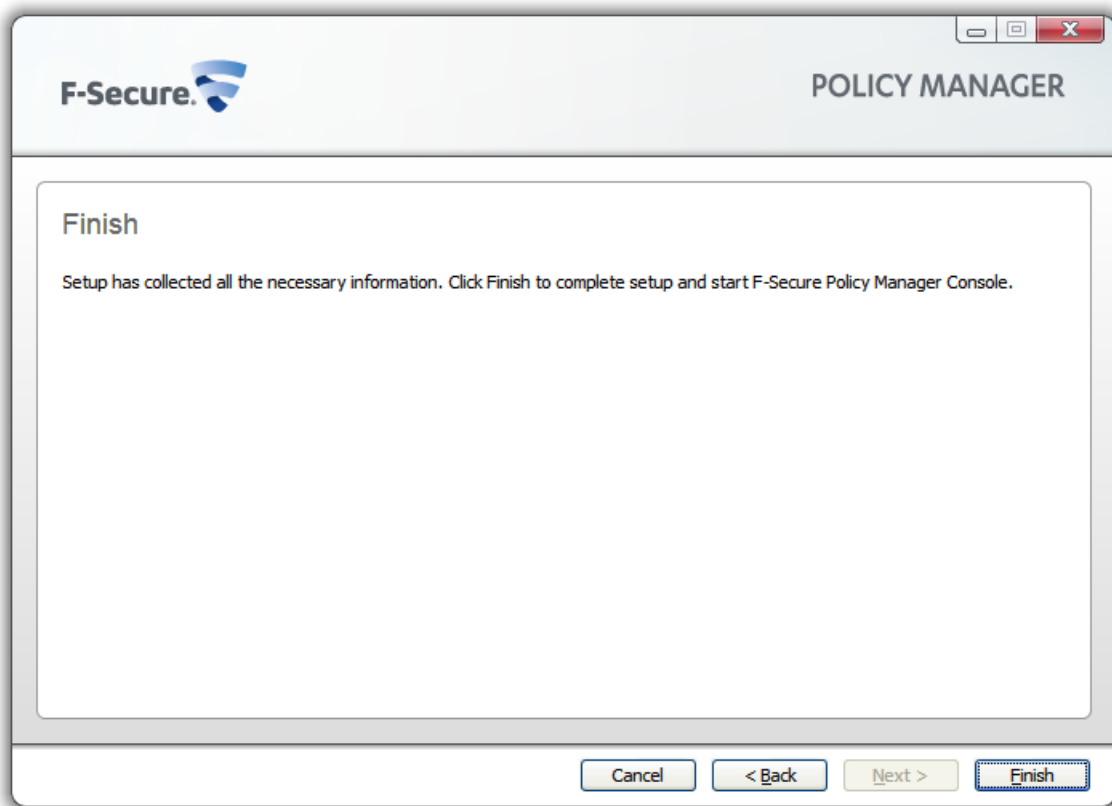
Using the path of the mouse movement ensures that the seed number for the key-pair generation algorithm has enough random variation.

When the progress indicator has reached 100%, the **Passphrase** dialog box will open automatically.

9. Enter a passphrase, which will secure your private management key.

The image shows a window titled "POLICY MANAGER" with the F-Secure logo in the top left corner. The main content area is titled "Enter passphrase" and contains the instruction: "Enter and confirm a passphrase that you wish to use, when you login to F-Secure Policy Manager Console (at least 6 characters):". Below this instruction are two text input fields. The first field is labeled "Passphrase:" and the second is labeled "Confirm passphrase:". Both fields contain seven black dots, indicating that a passphrase has been entered. At the bottom of the window, there are four buttons: "Cancel", "< Back", "Next >", and "Finish". The "Next >" button is highlighted with a blue dashed border.

10. Re-enter your passphrase in the **Confirm passphrase** field and click **Next**.
11. Click **Finish** to complete the setup process.



Policy Manager Console will generate the management key-pair. After the key-pair is generated, Policy Manager Console will start.

The setup wizard creates the user group `FSPM users`. The user who was logged in and ran the installer is automatically added to this group. To allow another user to run Policy Manager you must manually add this user to the `FSPM users` user group.

Policy Manager Console starts in **Anti-virus** mode, which is an optimized user interface for managing Client Security, Anti-virus for Workstations and Anti-virus for Windows Servers. If you are going to use Policy Manager Console for managing any other F-Secure product, you should use the **Advanced mode** user interface. You can access it by selecting **View** ► **Advanced mode** from the menu.

When setting up workstations, you must provide them with a copy of the `admin.pub` key file (or access to it). If you install the F-Secure products on the workstations remotely with Policy Manager, a copy of the `admin.pub` key file is installed automatically on them. However, if you run the setup from a CD, you must transfer a copy of the `admin.pub` key file manually to the workstations. The best and most secure method is to copy the `admin.pub` file to a diskette and use this diskette for workstation installations. Alternatively, you can put the `admin.pub` file in a directory that can be accessed by all hosts that will be installed with remotely managed F-Secure products.

Remote deployment of other F-Secure products

The steps given here are general guidelines for deploying other F-Secure products with Policy Manager.

Policy Manager can install software to new hosts that are not yet centrally managed. These hosts can be browsed from Windows NT domains using the **Autodiscover Windows hosts** feature. The software is then push installed to the managed hosts.

Policy Manager offers other methods of installing and updating managed applications. Shortcuts to all the installation-related features are gathered under the **Installation** tab.

The following steps are used for both the **Advanced mode** and **Anti-virus mode** user interface:

1. In Policy Manager, select the policy domain containing the hosts to which you will install.
2. Open the **Edit** menu and select **Autodiscover Windows hosts**.
 - a) From the **NT domains** list that opens, select one of the domains and click **Refresh**.
 - b) Select the hosts to be imported and click **Install**.
3. Select the installation package for the selected hosts.
4. Select the products to install.

You can choose to force reinstallation if applications with the same version number already exist.
5. Choose to accept the default policy, or specify which host or domain policy should be used as an anonymous policy.
6. Choose the user account and password used to perform the push installation.
7. Review the installation summary and then click **Start** to start the remote installation wizard.

Policy Manager will install the selected products on the hosts. The **Status** line displays when the process is complete. You can select in which domain the new hosts should be placed using the import settings.
8. Click **Finish**.
9. When the installation is finished, go to the **Status** tab to view the list of products that were installed.